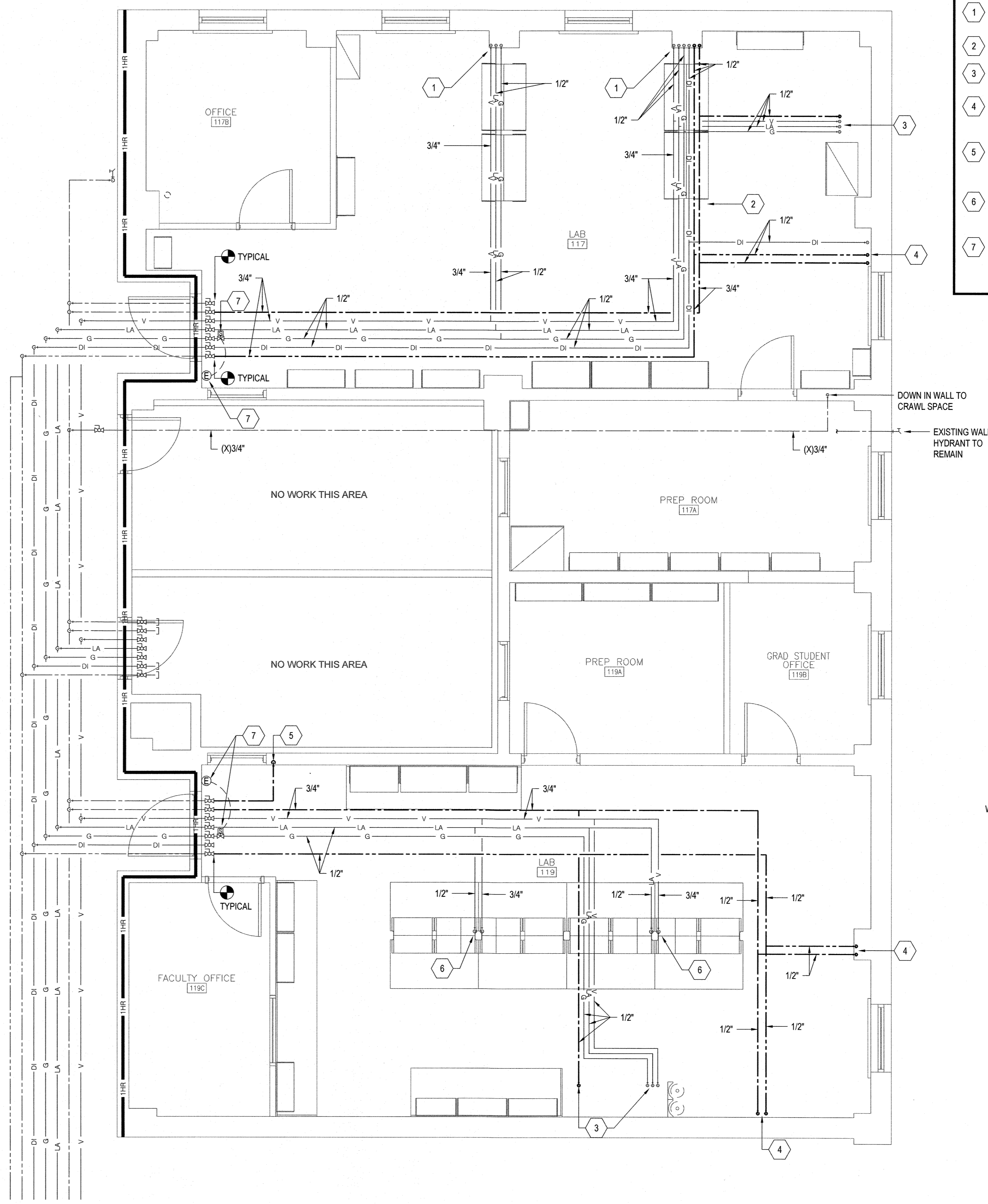


**1 - WASTE-VENT PLAN**  
1/4"=1'-0"



**1 - LAB GASES AND WATER PLAN**  
1/4"=1'-0"

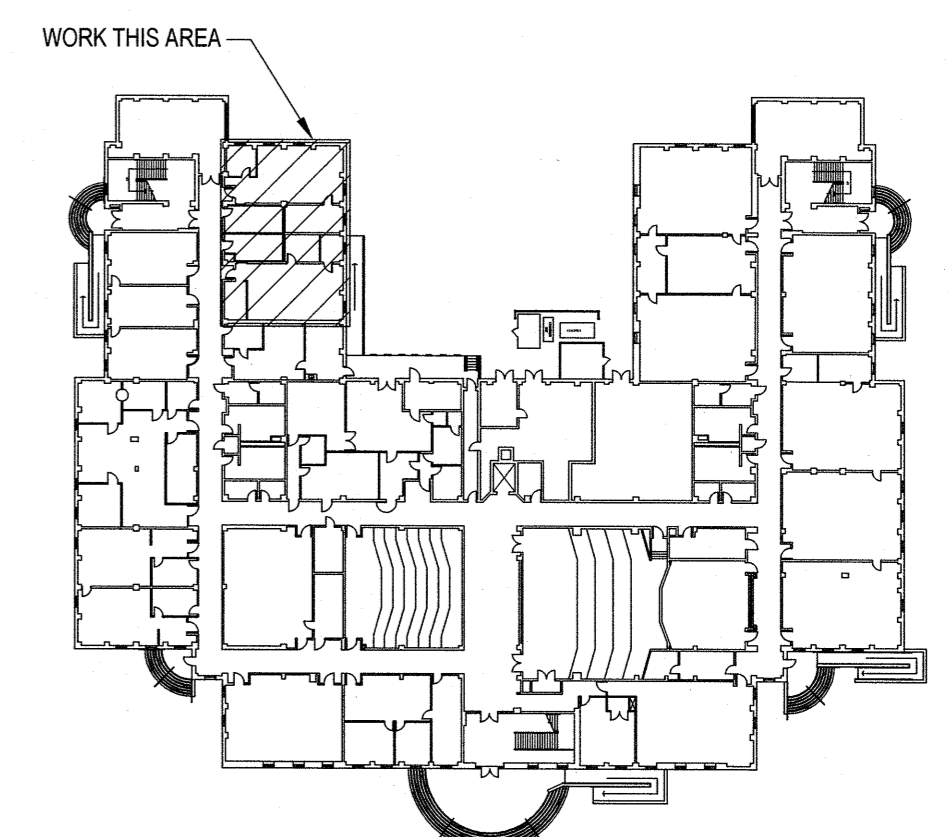
### NEW WORK KEYED NOTES

1. CONNECT TO GAS OUTLETS. REFER TO LAB EQUIPMENT VENDOR DRAWINGS FOR DETAIL.
2. DCW, DHW AND DI WATER FEED UP IN CHASE FROM BELOW. SEE LAB EQUIPMENT VENDOR DRAWINGS FOR DETAIL.
3. PC TO MAKE CONNECTIONS TO PRE-PIPED FUME HOOD ABOVE CEILING.
4. ROUTE PIPING INSIDE OF PIPE CHASE AND MAKE FINAL CONNECTIONS TO SINK FAUCET AND DECK MOUNTED EYEWASH. FIXTURES SUPPLIED BY LAB EQUIPMENT VENDOR.
5. CONNECT 1-1/2" DCW TO DRENCH SHOWER. DRENCH SHOWER PROVIDED BY LAB EQUIPMENT VENDOR, INSTALL BY PLUMBING CONTRACTOR.
6. CONNECT AIR AND VACUUM PIPING TO CEILING SERVICE PANELS. PANELS HAVE (4) CONNECTIONS FOR EACH GAS SERVICE. SERVICE PANEL BY LAB EQUIPMENT VENDOR. COORDINATE CONNECTIONS WITH LAB EQUIPMENT VENDOR.
7. EMERGENCY GAS SHUTOFF. P.C TO SUPPLY VALVE AND CONTROLS. P.C TO INSTALL VALVE AND E.C. TO WIRE CONTROLS.

**RECORD DRAWING**  
These Record Documents have been prepared based on information provided by others. The Engineer has not verified the accuracy and/or completeness of this information and shall not be responsible for any errors or omissions which may be incorporated herein as a result.

Dated: 2017-10-13

By:

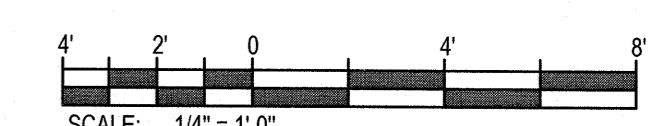


### KEY PLAN

NOT TO SCALE

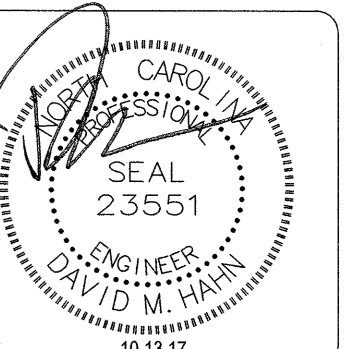
### FIRE WALL LEGEND

1 HR 1 HR FIRE PARTITION



REVISIONS	DATE	BY	APP'D
1	10.13.17		

**CBHF**  
Engineers, PLLC  
2246 Yaupon Drive  
Wilmington, NC 28401  
Phone: 910.791.4000  
Fax: 910.791.5266  
www.cbhfindesign.com  
NCEP-F-0006  
© Copyright 2017 CBHF Engineers, PLLC



UNIVERSITY OF NORTH CAROLINA - WILMINGTON  
DOBO HALL LABS 117 AND 119 RENOVATIONS  
601 S. COLLEGE ROAD, WILMINGTON, NORTH CAROLINA 28403  
STATE ID# 17-16975-01A  
**PLUMBING PIPING PLANS**

Job No.:	10290
Drawn:	JBS
Designed:	JBS
Checked:	DMH

Drawing No:

**P1.1**

Revision:

1